

1. Scope :

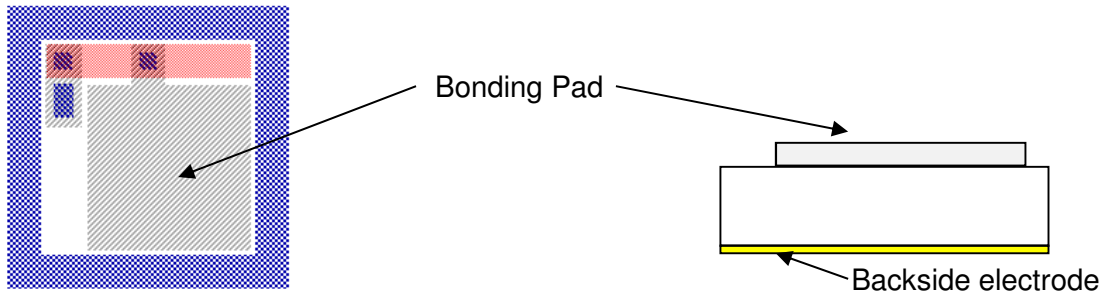
This specification applies to silicon resistor chips,
Device No. CR-0006.

2. Structure :

- 2-1. Silicon substrate.
- 2-2. Electrodes :
 Top side : Aluminum alloy.
 Back side : Gold.

3. Size :

- 3-1. Chip size (Including scribe line) : 6.88 x 6.88 mils (0.175 x 0.175 mm).
- 3-2. Chip thickness : 5.12 ± 0.59 mils (0.130mm ± 0.015 mm).
- 3-3. Bonding pad : 3.937 mils x 3.937 mils (0.100 mm x 0.100 mm).
- 3-4. Pattern drawing : Refer to the attached drawing.



4. Absolute maximum rating (Ta = 25°C)

Parameter	Symbol	Rating	Unit
Apply current	I	20	m A
Operating temperature	Topr	-40~+85	°C
Storage temperature	Tstg	-40~+100	°C

5. Electrical characteristics (Ta = 25 °C)

APPLY CURRENT (mA)	RESISTOR(Ω)			UNIT
	MIN	TYP	MAX	ohm
20	63	70	77	Ohm
20	72	80	88	Ohm
20	81	90	99	Ohm
20	90	100	110	Ohm
20	112	125	138	Ohm
20	144	160	176	Ohm
20	180	200	220	Ohm
20	216	240	264	Ohm
20	270	300	330	Ohm
20	360	400	440	Ohm